



EZ Cote
Tape
Plug

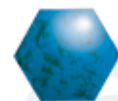
NEW GENERATION OF WOUND DRESSING



EZ is haemostatic

EZ is flexible

EZ is resorbable



Biomatlante

eXpert in bone architecture

EZ Cote Tape Plug

Optimal wound dressing matrix

EZ Cote / EZ Tape / EZ Plug are used in dental surgery.

EZ resorbable collagen wound dressings are flexible sponges derived from highly purified porcine dermis.

Their porous structure allows the absorption of blood and other exudating fluids from the open wound.

Their different product shape and degree of flexibility easily adapt to the constraints of the surgical site.

Complete wound dressing line

Each shape of EZ sponges has a unique dimension, shape and flexibility and satisfies essential haemostatic needs, required in dental surgical procedures.

Indications



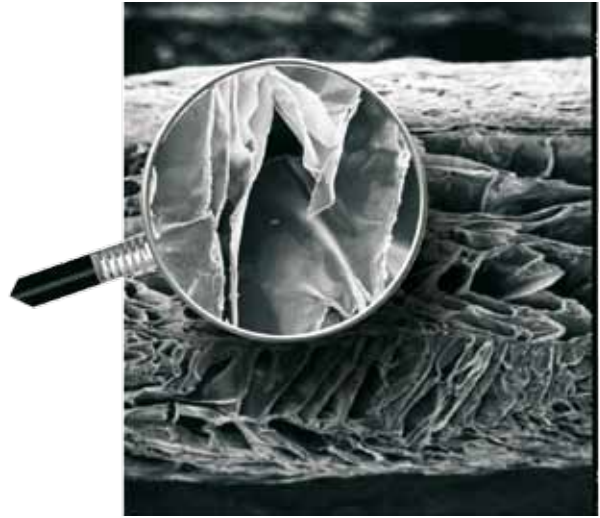
Periodontal surgical wounds
Oral ulcers (non-infected or viral)
Denture sores



Minor oral wounds
Closure of grafted sites
Suture sites



Extraction site
Biopsy sites
Surgical wounds



3 Dimensional organization of collagen structure

Size and Packaging

EZ Cote

Packed per 5 units Unique size 20mm x 40mm x 3mm



Ref : 0701EZC2040



EZ Tape

Packed per 5 units Unique size 25mm x 75mm x 1mm



Ref : 0701EZT2575



EZ Plug

Packed per 5 units Unique size 10mm x diam 20mm



Ref : 0701EZP1020



BIOMATLANTE
ZA les Quatre Nations
5, rue Edouard Belin
44360 Vigneux de Bretagne
France

Tel : +33(0) 228 020 009
Fax : +33(0) 228 020 010
contact@biomatlante.com
www.biomatlante.com